

## SANDWELL CHILDREN'S SERVICES – Reset and Recovery update

### COUNCIL SERVICES:

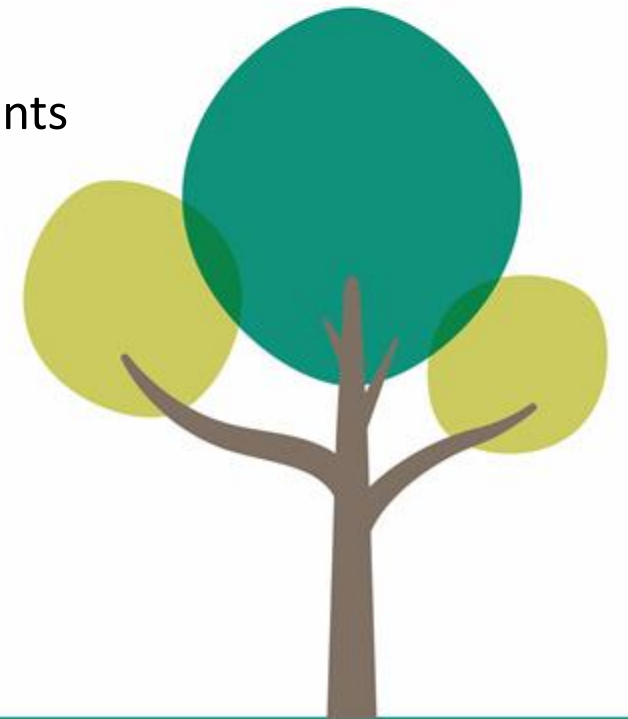
- Majority have continued with staff working in offices (eg Admissions) or at home – innovative approaches (eg careers interviews)
- Services that work directly with the public have been agreed via the Reset and Recovery Board – to date:
  - Sandwell Residential Education Services
  - Play Services
  - Sandwell Adult and Family Learning and Connexions
  - Inclusive Learning and associated transport for SEND pupils
  - Safeguarding, Attendance and Prosecution
  - School and settings advisory teams
- Services contracted have brought plans to the Reset and Recovery Board for assurance (eg Sandwell Children's Trust, Action for Children, Murray Hall)



## SANDWELL CHILDREN'S SERVICES – Reset and Recovery update

### SCHOOLS and EARLY YEARS:

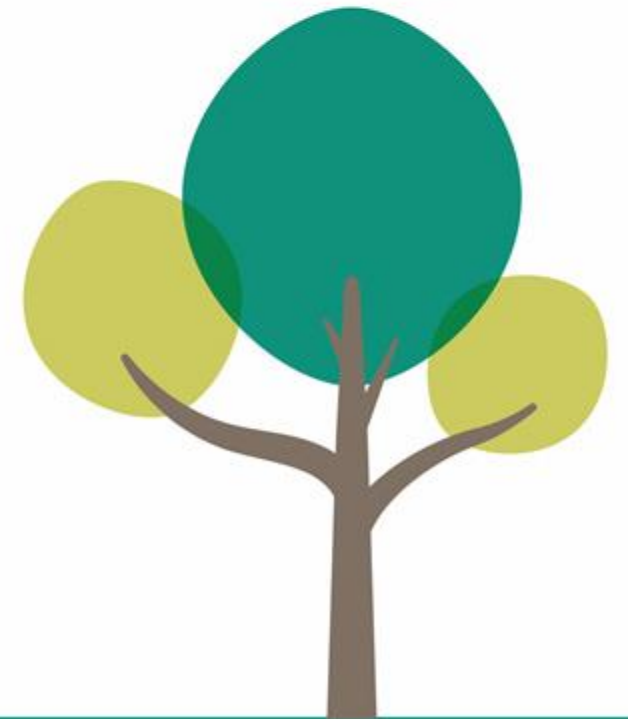
- All schools open – attendance good but Elective Home Education requests increased
- Excellent engagement from schools and academies
- Early Years settings and childminders increasing
- Early challenges – positive cases, testing, cleaning, digital learning offer
- Transport
- Catch up activities and tutoring
- Pupil wellbeing – new Personal, Social and Health Education (PSHE) requirements
- Pupil assessment, testing and examinations 2020/2021



# SANDWELL CHILDREN'S SERVICES – Reset and Recovery update

## VULNERABLE CHILDREN:

- Vulnerable Children Group meeting
- Shielded children
- Detached Youth Work
- Laptops and dongles
- Data returns
- Surge planning
- Strategic Commissioning
- Corporate Parenting



# SANDWELL CHILDREN'S SERVICES – Reset and Recovery update



## COMMUNICATION AND INFORMATION

- Sitrep (including Sandwell Children's Trust), Reset and Recovery Board, Vulnerable People Cell meetings
- With partners (education providers, safeguarding partnership)
- Several times weekly with DfE and Ofsted
- Regional and national meetings and actions
- Voices of children, young people and families
- Staff meetings and other support

## IMPACT

- On children, young people and families; on services; on staff; on budgets

